

# Recycling in Specimen Reception

## Traditional Model of Care



Samples arrive at specimen reception



Excessive number of bins at workstation

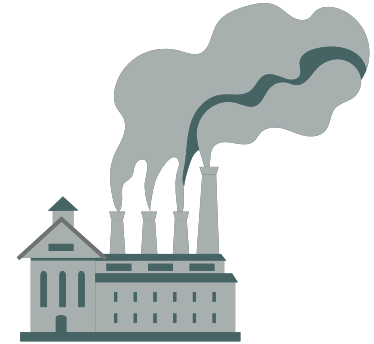


Bins contain mix of patient request forms, sample bags, labels and gloves

Waste is disposed of infectious waste stream



Waste is incinerated, emitting 1200kg CO2e per year



Incineration releases greenhouse gases into the air, contributing to poor air quality and in turn worsening health

## Sustainable Model of Care

Engaged IPC, waste, H&S, specimen reception team, facilities.



Conduct waste audit and risk assessment



Reduced number of bins at workstations from 11 to 6.



Removed infectious waste bags and replaced with recycling bags



Clearly labelled bins



Waste is primarily recycled, saving 800kg CO2e and £700 per year.



Improved air quality, supporting healthier communities and reducing pressure on NHS